

NFP2

Edge Lit LED Flat Panel

The Nordeon Installer's Choice 2x2 Flat Panel is well suited for offices, schools, healthcare facilities, and other multi-use spaces with drop ceiling mounting. The energy-efficient flat panel delivers up to 118 lumens per watt yet delivers visually comfortable illumination. Color temperature is neutral white at 4000K with CRI > 80. Optional emergency battery back-up and surface mounting kits are available as accessories and ordered separately.

INSTALLER'S CHOICE®



Date: _____ Type: _____ Catalog Number: _____

Project Name: _____

ORDERING INFORMATION

LUMINAIRE			
MODEL	SIZE	CCT	DRIVER
NFP2*	2x2	40K	UNV
Nordeon Installer's Choice Flat Panel	2x4	4000K	100-277V

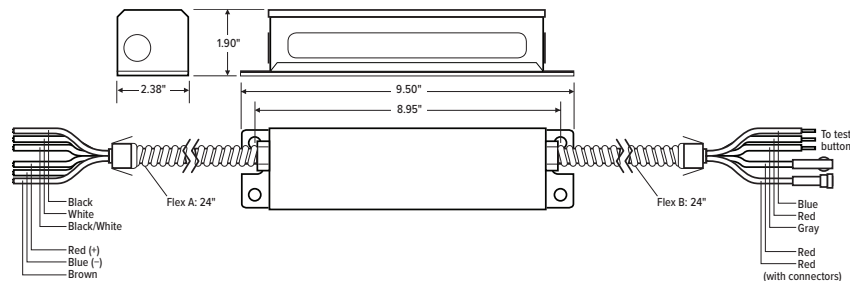
* Luminaires ship in packages of 2 units each.

SURFACE MOUNT KIT	
MODEL	SIZE
NFP-SMK	2x2
Flat Panel Surface Mount Kit	For 2x2' NFP2
	2x4
	For 2x4' NFP2

EMERGENCY BATTERY BACKUP

EM-LED-5-500

Emergency Battery Backup for NFP2, 5 Watt Output, ~ 500 lumen output. Dual Flex Conduit, Universal 120-277v input. Drives LED loads at 5 watts nominal for minimum of 90 minutes. Emergency pack is designed to deliver 5 watts to a constant current LED load. Suitable for dry or damp locations. For field installation.



NFP2

Edge Lit LED Flat Panel

PHYSICAL		2x2' NFP2	2x4' NFP2
	HOUSING	Die-Cast Aluminum	
	OVERALL DIMENSIONS	24" L x 0.5" W x 24" H	48" L x 0.5" W x 24" H
	OPERATING TEMPERATURE	-4°F to 113°F (-20°C to 45°C)	

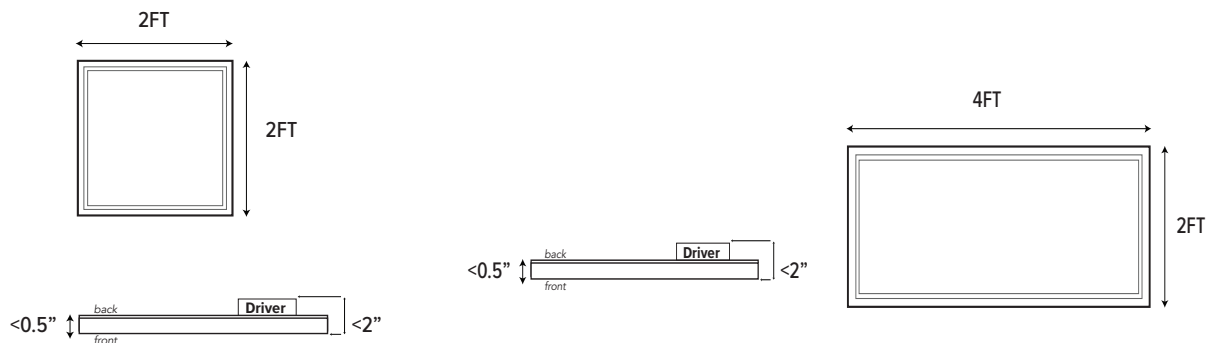
ELECTRICAL	POWER	38 watts max.	62 watts max.
	CURRENT	0.32 amps at 120 volts 0.14 amps at 277 volts	0.52 amps at 120 volts 0.22 amps at 277 volts
	CONTROL	0-10V Dimming	

PHOTOMETRIC	LED	Static White 4000K	
	COLOR RENDERING INDEX	> 80	
	NUMBER OF DISTRIBUTIONS	One	
	BEAM ANGLE	120°	
	LUMEN MAINTENANCE	L70 > 50,000 Hours at 77°F*	

LIGHT DISTRIBUTIONS	DISTRIBUTION	BEAM ANGLE	EFFICACY (lm/w)	LUMEN OUTPUT	
	Values based on full output.				
	2x2' NFP2				
	STANDARD	120°	118	4491	
2x4' NFP2					
STANDARD	120°	111	6858		

CERTIFICATIONS	SAFETY	ETL Certified
	INGRESS PROTECTION	IP40

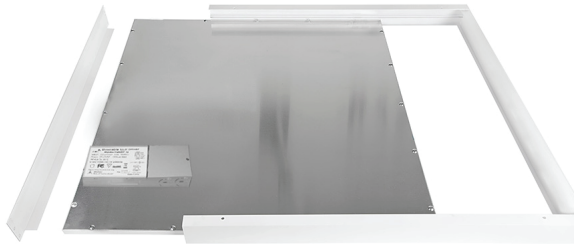
DIMENSIONS



NFP2

Edge Lit LED Flat Panel

Surface Mount Kit for 2x2 or 2x4 LED Flat Panels.



- KIT INCLUDES:**
- Surface Mount Kit
 - Assembly Screws
 - Anchoring Screws

- WHAT YOU'LL NEED (NOT INCLUDED):**
- Wiring supplies as specified by code
 - LED Flat Panel fixture

Number	A	B	C	D
Accessories				
Quantity	2pcs	2pcs	8pcs	6pcs

PHOTOMETRICS- 2X2' NFP2

NFP2-2X2-40W-40K-UNV-WH.IES

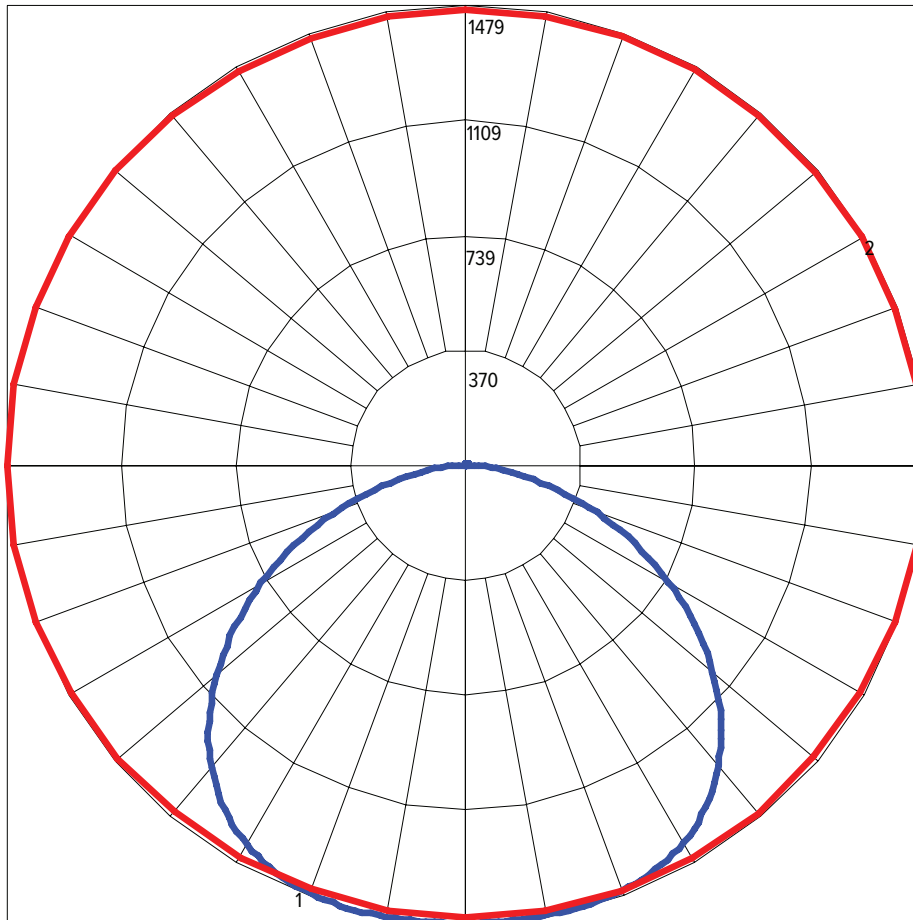
CIE Type	Direct
Delivered Lumens	4,491
Watts	38
Efficacy	118 LPW
Spacing Criterion (0-180)	1.42
Spacing Criterion (90-270)	1.30

ZONAL LUMEN SUMMARY

Zone	Lumens	% Lamp
0-30	1193	27
0-40	1989	44
0-60	3566	79
0-90	4484	100
0-180	4491	100

CANDELA DISTRIBUTION

— HORIZONTAL
— VERTICAL



PHOTOMETRICS- 2X4' NFP2

NFP2-2X4-65W-40K-UNV-WH.IES

CIE Type	Direct
Delivered Lumens	6,858
Watts	62
Efficacy	111 LPW
Spacing Criterion (0-180)	1.30
Spacing Criterion (90-270)	1.44

ZONAL LUMEN SUMMARY

Zone	Lumens	% Lamp
0-30	1798	26
0-40	3005	44
0-60	5416	79
0-90	6850	100
0-180	6858	100

CANDELA DISTRIBUTION

— HORIZONTAL
— VERTICAL

