

SURFACE MOUNT KIT

For LED Flat Panels

NORDEON

LIGHTING SOLUTIONS

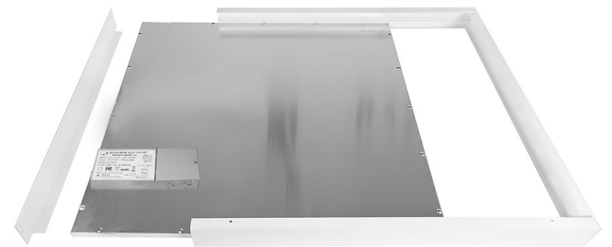
DESCRIPTION

Surface Mount Kit for 2x2 or 2x4 LED Flat Panels.

2x2 KIT



2x4 KIT



MODEL SIZE

NFP-SMK	2x2
	2x4

KIT INCLUDES:

- Surface Mount Kit
- Assembly Screws
- Anchoring Screws

WHAT YOU'LL NEED (NOT INCLUDED):

- Wiring supplies as specified by code
- LED Flat Panel fixture

Number	A	B	C	D
Accessories				
Quantity	2pcs	2pcs	8pcs	6pcs