

# VERTICAL SURFACE LED

## ARCHITECTURAL LED LUMINAIRE INSTALLATION INSTRUCTION

**⚠ RISK OF FIRE AND ELECTRICAL SHOCK. FIXTURE MUST BE INSTALLED BY A QUALIFIED ELECTRICIAN ONLY IN ACCORDANCE WITH NATIONAL, LOCAL BUILDING AND ELECTRICAL CODES. DISCONNECT POWER AT ELECTRICAL PANEL BEFORE SERVICING.**

### IMPORTANT

1. Read all instructions.
2. Please install in accordance with national and local electrical code regulations.
3. This product is intended to be installed and serviced by a qualified, licensed electrician.
4. No wet locations! dry and damp locations only!
5. Turn off electrical power before installing or servicing fixture in any way.
6. To reduce the risk of fire and overheating, make sure all connections are tight.
7. Under no circumstances can the lighting fixture be covered with heat insulation gasket or similar materials.

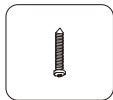
### ACCESSORY



Wire Nut



Anchor



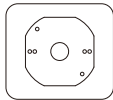
Screw PA4X30



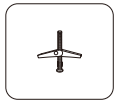
Screw CM4X12



Power Cord

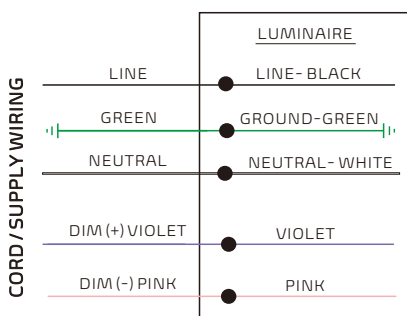


Surface Plate



Butterfly  
Drywall  
Anchor

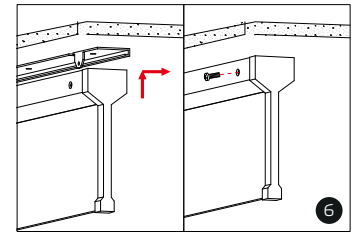
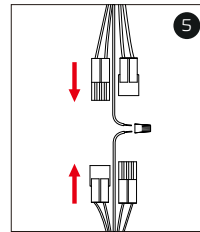
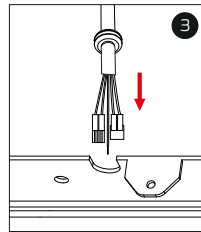
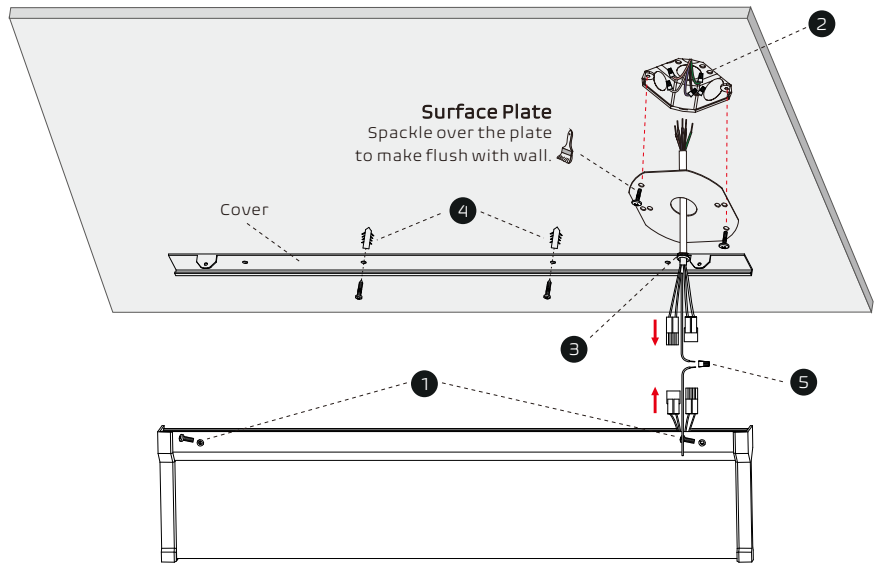
### WIRING



Please isolate two dimming wires by P2 terminal individually if no need dimming; **MUST connect wires with corresponding colors as shown.**



**SHOCK HAZARD!**  
May result in serious injury or death.  
Turn power OFF at circuit breaker prior to installation or servicing.



### PLEASE FOLLOW THESE STEPS

- 1 Take off the cover by screwdriver.
- 2 Connect the wires of power cable (provided) with junction box by the wiring caps. Cover the junction box with Surface Plate and fix it with screws, then plaster.
- 3 Insert the power cord into the opening of cover as shown.
- 4 Fix the cover in the ceiling.

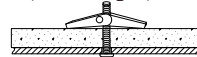
#### Ceiling Type

Solid Ceiling (By Others)



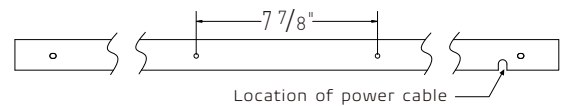
Hole Diameter: 0.20"

Drywall Ceiling (By Others)



Hole Diameter: 0.47"

#### Mounting Point



Location of power cable

- 5 Connect wires by quick connectors and wiring caps, then hide all wires into the junction box.
- 6 Fix led luminaire on the cover with screws.

#### Wattage & CCT Adjustable By Dip Switch

Length	High	Medium	Low
3'	4000lm	3000lm	2000lm
4'	4000lm	3000lm	2000lm

# VERTICAL WALL MOUNT LED

# ARCHITECTURAL LED LUMINAIRE INSTALLATION INSTRUCTION

**⚠ RISK OF FIRE AND ELECTRICAL SHOCK. FIXTURE MUST BE INSTALLED BY A QUALIFIED ELECTRICIAN ONLY IN ACCORDANCE WITH NATIONAL, LOCAL BUILDING AND ELECTRICAL CODES. DISCONNECT POWER AT ELECTRICAL PANEL BEFORE SERVICING.**

## IMPORTANT

1. Read all instructions.
2. Install in accordance with national and local electrical code regulations.
3. This product is intended to be installed and serviced by a qualified, licensed electrician.
4. Do not install in wet locations. For dry and damp use only.
5. Turn off electrical power before installing or servicing fixture in any way.
6. To reduce the risk of fire and overheating, make sure all connections are tight.
7. Under no circumstances can the lighting fixture be covered with heat insulation gasket or similar materials.

## ACCESSORY



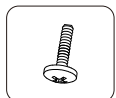
Wire Nut



Anchor



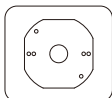
Screw PA4X30



Screw CM4X12



Power Cord



Surface Plate

## WIRING

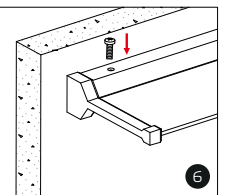
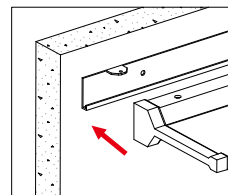
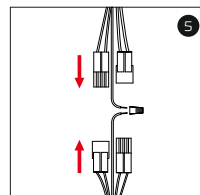
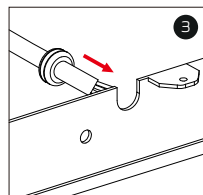
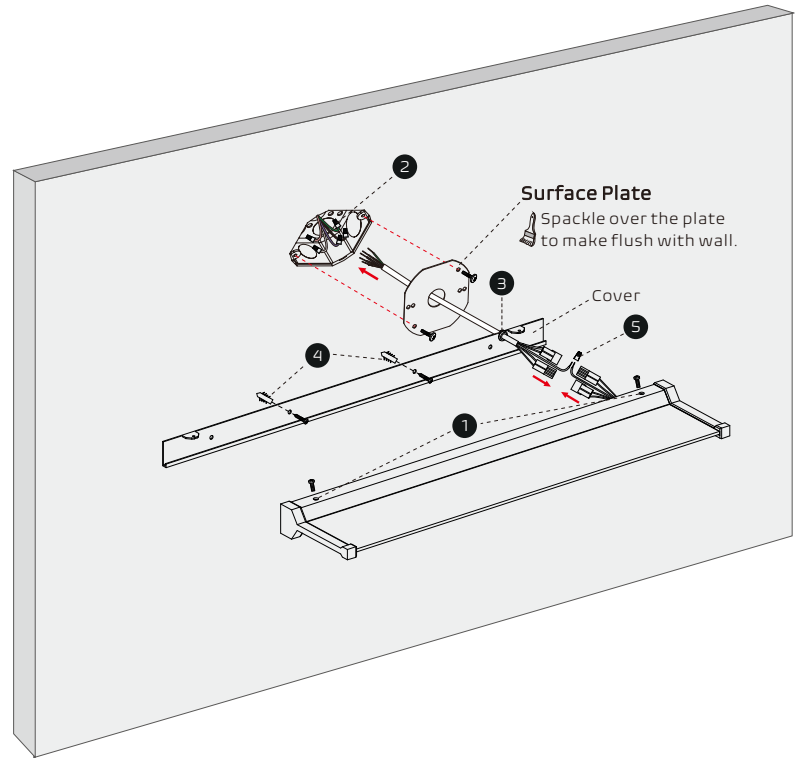
CORD / SUPPLY WIRING		LUMINAIRE	
LINE	●	LINE- BLACK	●
GREEN	●	GROUND-GREEN	●
NEUTRAL	●	NEUTRAL- WHITE	●
DIM (+) VIOLET	●	VIOLET	●
DIM (-) PINK	●	PINK	●



Please isolate two dimming wires by P2 terminal individually if no need dimming; **MUST connect wires with corresponding colors as shown.**



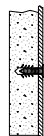
**SHOCK HAZARD!**  
May result in serious injury or death. Turn power OFF at circuit breaker prior to installation or servicing.



## INSTALLATION STEPS

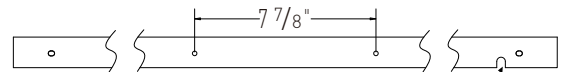
1. Take off the cover by screwdriver.
2. Connect the wires of power cable (provided) with junction box by the wiring caps. Cover the junction box with Surface Plate and fix it with screws, then plaster.
3. Insert the power cord into the opening of cover as shown.
4. Fix the cover in the ceiling.

### Ceiling Type



Hole Diameter: 0.20"

### Mounting Point



Location of power cable

5. Connect wires by quick connectors and wiring caps, then hide all wires into the junction box.
6. Fix led luminaire on the cover with screws.

### Wattage & CCT Adjustable By Dip Switch

Length	High	Medium	Low
3'	4000lm	3000lm	2000lm
4'	4000lm	3000lm	2000lm